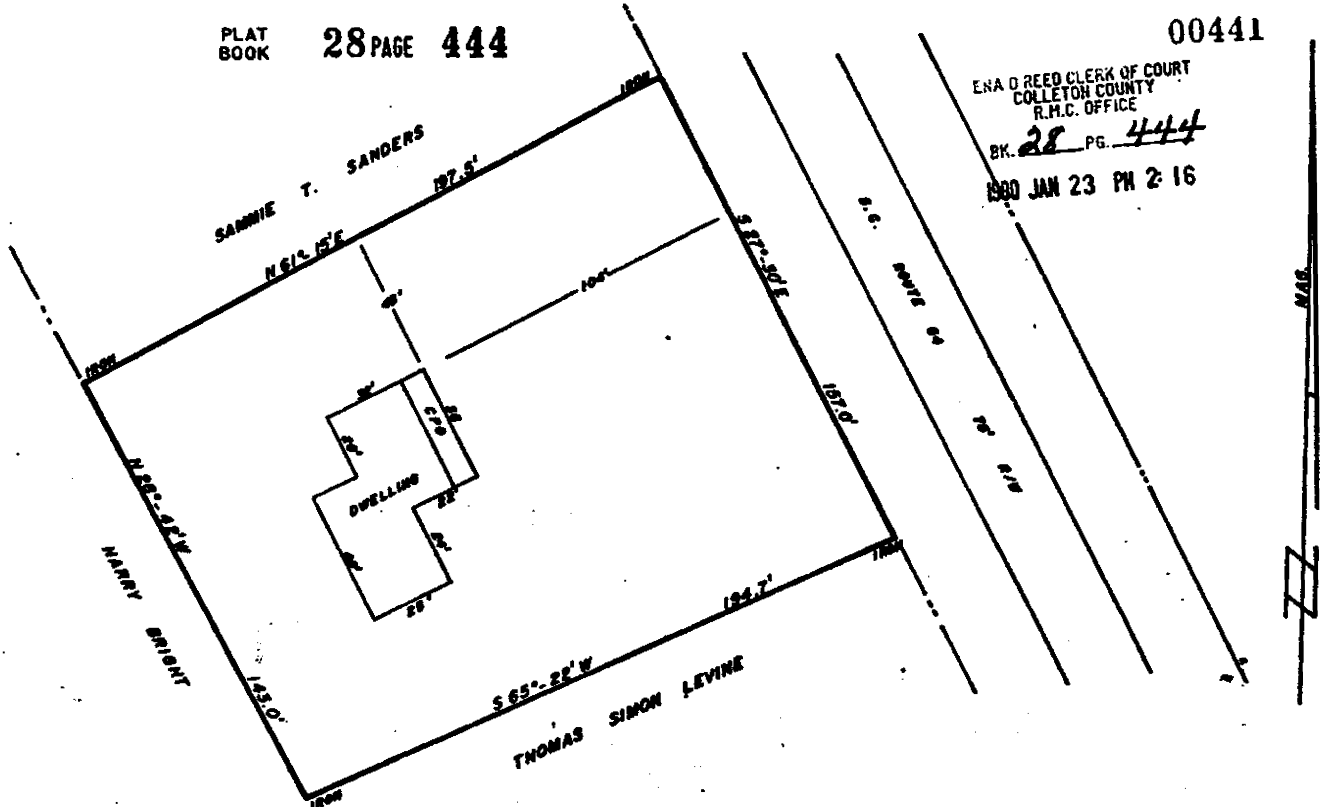


E.N.A. O. REED CLERK OF COURT  
COLLETON COUNTY  
R.M.C. OFFICE

BK. 28 PG. 444

1900 JAN 23 PM 2:16



FLOOD INFO.  
ACCORDING TO H.U.D. FLOOD  
MAPS, THIS IS NOT A FLOOD  
PRONE AREA.

SOUTH CAROLINA  
COLLETON COUNTY

Plat Exempt from  
Planning Commission Review

PLAT OF A LOT SITUATE IN MASHAWVILLE  
SURVEYED FOR

Laurie C. Sanders

DEC. 21, 1900

Recorded this 23rd day of  
Jan 1900 in Book 28  
Page 444 at 2:16 P.M.  
E.N.A. O. Reed  
Clerk of Court, Colleton County, SC

SCALE: 1" = 40'  
EC = 1/8000



W. Gene Whetsell  
W. GENE WHETSELL  
R.L.S. - 5131  
WALTERSBORO, S.C.

(SEAL AFFIXED)